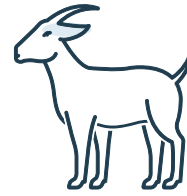


SHEEP AND GOAT TRACEABILITY TASK FORCE



Harvested Rangeland Goats (HRG)

HRG accreditation



Harvested Rangeland Goats definition: goats that

- have been captured from a wild state AND
- have not been born as a result of a managed breeding program AND
- have not been subjected to any animal husbandry procedure or treatment

Harvested Rangeland Goats can be moved from property of capture to a registered goat depot or abattoir without an NLIS device if the following conditions are met.

If you have:

- 01 Goats that meet the definition of HRG**
- 02 Current PIC registered to your property**
Registering and updating a PIC
www.integritysystems.com.au/about/contacts
- 03 LPA accreditation for goats**
LPA accreditation page – goats
www.integritysystems.com.au/on-farm-assurance/livestock-product-assurance
- 04 LPA accreditation for HRG**
LPA accreditation page – HRG
www.integritysystems.com.au/on-farm-assurance/livestock-product-assurance

Yes



Option

You have the option of consigning harvested rangeland goats directly to a processor or to a registered goat depot without having to identify them with an NLIS device.

Producers with LPA Goat accreditation are eligible to apply for LPA HRG accreditation.

During the application process, LPA **will request approval from the relevant jurisdiction** to grant HRG accreditation, LPA will notify the producer to inform them of the outcome of their application.

If successful

If the application is successful, an HRG status will be assigned to the accredited PIC on the NLIS database. The producer will then be able to access HRG NVD waybills through their LPA account for device-free movements of harvested rangeland goats.

- Jurisdictions will provide the authorisation to LPA for HRG status to be assigned to the accredited PIC.
- An HRG accredited producer must agree to an LPA audit once every LPA accreditation cycle to keep all NVD waybills for at least 5 years, or longer if required by their state / territory regulations.
- Using the eNVD option guarantees that you will automatically have access to the most current version of every NVD and provides electronic storage.

You must fit an approved NLIS electronic device to all goats that are captured from a wild state

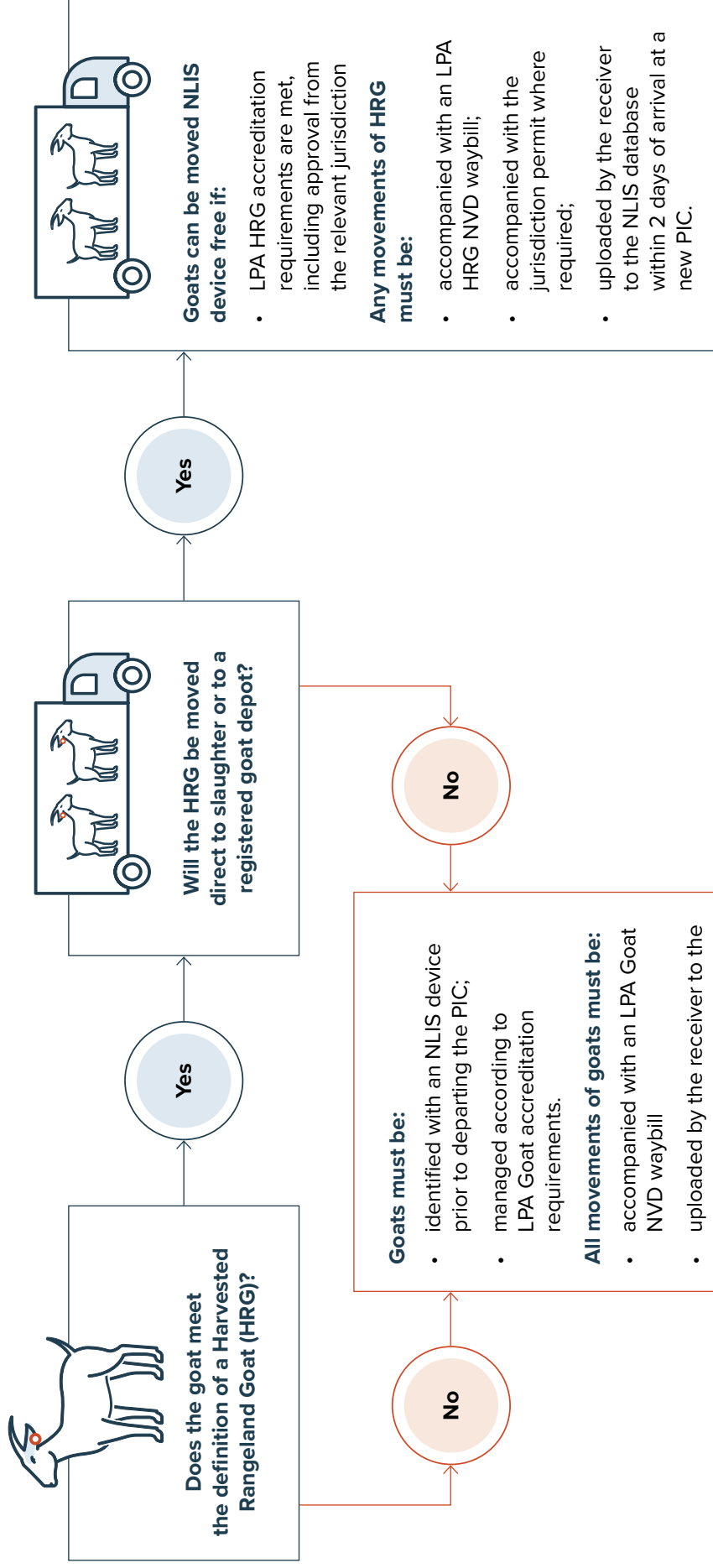
- that are subject to any animal husbandry procedures or treatment
- are being sent to another property other than direct to a processor or a registered goat depot
- are the result of managed breeding or
- if you do not have HRG accreditation

If you use the printed NVD waybill books, be aware that new versions for both Goats and Harvested Rangeland Goats will be introduced from 1 January 2025.

Any harvested goats **that do not meet the definition must be identified** with an approved NLIS electronic device prior to dispatch from the property.

Decision flowchart

for consigning harvested rangeland goats with and without an NLIS device



Every movement of goats from one PIC to another PIC (P2P) requires a record on the NLIS database within 2 days of arrival.