

THE POLICY PROCESS



**YOUR INDUSTRY.
YOUR VOICE.
YOUR FUTURE.**

Sheep Producers Australia (SPA) is the peak industry organisation for sheep and lamb producers. SPA works to enhance the industry's productivity, profitability and sustainability by representing all producers through the development of strong policy that focuses on producer needs.

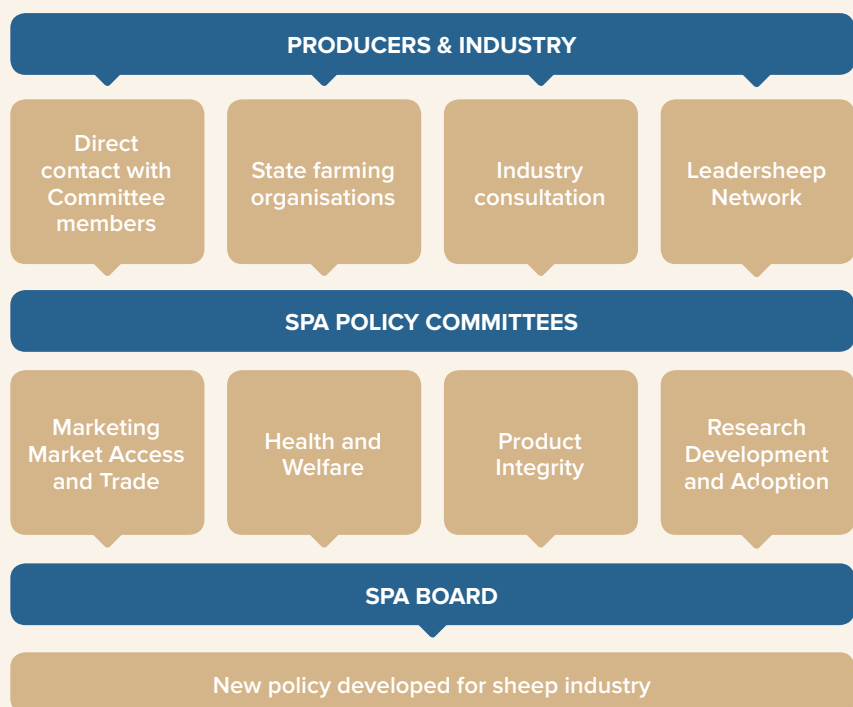
SPA develops policy that is well researched and informed via extensive consultation direct with producers across Australia. Within this policy process, all producers have the opportunity for their voice to be heard nationally.

THE BOARD

SPA is governed by a skills-based board, which operates in the best interests of the national industry. The board is responsible for the governance of the organisation. The board review committee decisions and endorse policy recommendations from the policy committees. The board includes no more than two representatives from any state.

POLICY COMMITTEES

The board is advised by four policy committees – Marketing Market Access and Trade; Health and Welfare; Product Integrity; Research Development and Adoption; and two board committees – Industry Leadership and Community Engagement and Finance and Risk. Policy committees consider



policy matters in detail and make recommendations for board approval. The board will make the final decision in the industry's best interests.

BOARD COMPOSITION

The board is comprised of a maximum of nine directors – seven member-elected directors and up to two board-appointed members. Member-elected directors are elected based on requirements for the board's composition and after review by the Board Selection Committee. The office bearers are elected by the board.

BOARD COMMITTEES

Board committees are comprised of people elected to the board and others who are co-opted to fill skills and experience gaps.

COMMITTEE COMPOSITION

Each policy committee comprises one person from each state, one director, up to one individual member and up to one person who need not be a member (who may be co-opted for skills and experience). A director appointed to a policy committee does not necessarily need to be the Chair.